

DRIVE HOCKEY

ANALYTICS

Auto capture, breakdown and benchmark every players skill using Hockey's most advanced sensor-based tracking technology

Accelerate Player & Team Development

Drive Hockey empowers teams to harness NHL-level training data without breaking the bank. Elevate your player development program by utilizing Drive Hockey's cutting-edge sensors, capable of tracking an impressive 3,000 data points per second. Our AI-driven analytics platform precisely assesses athletic skills, intensity, and situational performance for every player, offering a valuable benchmark comparison. Equip your team with tangible, data-driven insights to enhance their performance on the ice!



Drive Hockey's location sensors combined with AI capture deep skill & performance analytics in real-time

Player Evaluation Scorecard

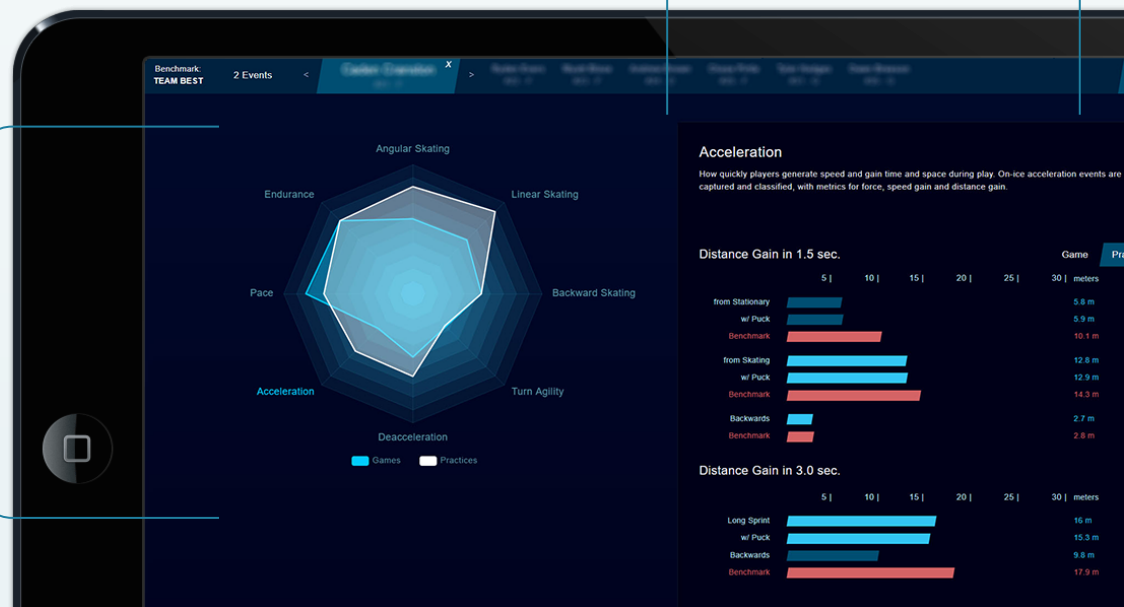
Indexed performance rating of each players intensity, athletics, situational performance and positioning versus the top benchmark performers. Each index rating provides a drill-down assessment of individual skills / abilities and their broken down metrics.

Skill Breakdown

Highlighting detailed metrics around individual skills, and which aspects a player can work on to improve

Player Overview

Player performance ratings compared to benchmarked top peers. Each rating is based on an index of avg and top performances across a series of tracked events.



What is Player Skill Testing and how does it work?

Player skill testing is used to objectively assess hockey players by measuring how well they perform specific skills. Drive Hockey's sensor & AI technology pinpoints these skills during practice, games, or combines and compares them to the best players in their age and skill level. Each skill is then broken down, showing where they excel and where they can improve. This system provides valuable feedback for coaches to tailor their training programs and help each player develop their individual hockey skills.

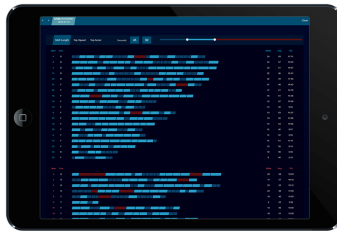


Drive Hockey's sensor based technology captures broken down skill metrics and tracks player development progress over time

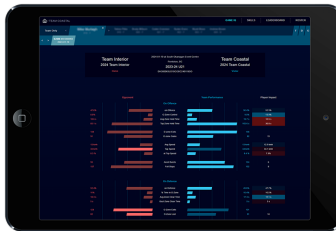
Sortable Rankings



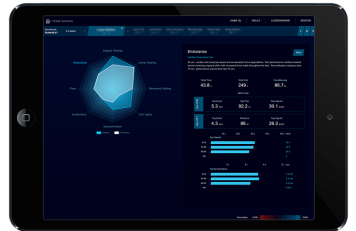
Game TOI / Shift Metrics



Game Impact



Skill Breakdown & Benchmarking



COACH & TEAM ADMIN ANALYTIC ACCESS

PLAYER / PARENT ANALYTICS ACCESS

Do parents/players have access?

YES, if you are invited by your team, you will have limited time access to view your analytic dashboards.

How quickly are the results available?

Analytics are typically processed within 30 min. from uploading the event data to Drive Hockey's cloud. Internet connectivity or tracking multiple events could cause delays in uploading data.

How often should players be tested?

We recommend controlled testing (on-ice combines) at the start & end of each season, with game tracking at the coaches discretion. Practice tracking can be used ongoing for focused skill development, and to help create a more competitive environment.

What type of skills are tested?

Practices - linear/angular speed, turns/transitions, stops/starts
Combines - skating plus puck carrier, support & defender breakdowns
Games - skating plus shifts, offensive impact, defensive impact, positioning

Can players see each others skill reports?

NO, unless you directly provide them access. Your coach and others with access rights to your team can see all player data.

Is participation optional?

YES, you can refuse to take part at any point by simply turning off your tag or not wearing one. By participating, you are waiving moral rights to collected sensor data in favour of Drive Hockey for its commercial use, which includes processing analytics and providing access.

How are players personal information handled?

We only collect or disclose the minimum personal data required for the purpose for which it is being used, including allowing your team coaches to identify which performance data belongs to which player. Sensor and performance data is otherwise anonymous.

Are there any risks?

NO, there are no known harms associated with participation. The same technology is being used in the NHL on a daily basis.



Who else uses this type of sensor tracking technology?



For more information, visit drivehockey.com