

DRIVE HOCKEY

ANALYTICS

Tournaments
& Special Events



Dalls, Chicago, Penticton

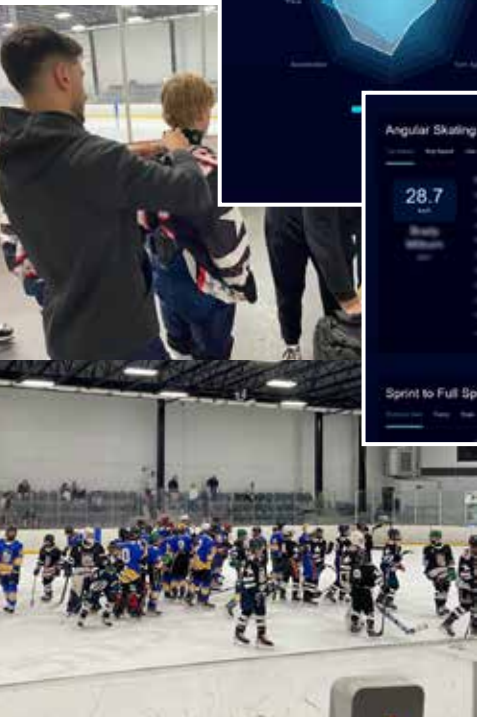
Bringing Hockey Innovation and extra excitement to key events with next generation player analytics

Drive Hockey is proud to have partnered with key pro and amateur leagues to enhance their special events. In the USHL Player Development Series, over 200 participating players were equipped with small, powerful sensors attached to their shoulder pads, allowing for unique performance data to be captured at a rate of over 3,000 data points per second. Coaches, players, scouts and media were able to review performance analytics across a variety of athletics, gameplay and tactical metrics.



USHL Frosty Cup, ECHL All Star Game & BCHL All Star Weekend

Drive Hockey's next generation technology was highlighted at marquee events for the USHL, ECHL and BCHL. Participating teams, players, media and scouts were offered a glimpse of the power of NHL-level analytics in amateur environments.



"We are excited to partner with Drive Hockey Analytics for the USHL Player Development Series later this month. Drive Hockey is an industry leader in hockey tracking and player skill analytics and we're looking forward to working with them at this event."

- Frank Butler, USHL Director of Player Personnel

DRIVE HOCKEY

ANALYTICS

On-ice Testing Combine



Penticton, Canada

BCHL Partners with Drive Hockey Analytics to Provide On-ice Player and Goalie Combine

BCHL players participating in the Top Prospects Game and Combine were equipped with Drive Hockey's small, powerful sensors, allowing unique performance data to be captured at a rate of over 3,000 data points per second. Coaches, players, scouts and media were able to review player & team data across a variety of athletics, game play and tactical metrics



On-ice Player Testing with Individual Analytic Reports

Drive Hockey tracked over 3,000 data points per second in real-time during the 2023 and 2024 BCHL Top Prospects Combine & Game. Combine and game data was processed using AI, producing team and player reports, comparing top combine environment metrics to game performance.



Player Testing with Advanced Sensor Technology

Drive Hockey's advanced sensors provide player testing aligned to the same data standards as used by the NHL. Detailed player breakdowns of over 20 unique skills are produced for each participant, with benchmark comparisons to top performers.



We are excited to be working with Drive Hockey Analytics at our Top Prospects Game next week. After they were able to provide important data about our players at last year's event, we were happy to have them do the same thing this year, while also taking charge of our on-ice combine."

- Steven Cocker, BCHL Commissioner

DRIVE HOCKEY

ANALYTICS



Player Development Benchmarking

Metrics Tracked & Benchmarked

A small sample of performance data collected and processed from Express practices:

- Top & Avg Angular Skating Speed
- Top & Avg Linear Skating Speed
- Angular & Linear Use-of-Speed
- Avg & Top Distance per min.
- 3.0 Sprint to Full Speed Distance
- 1.5 Acceleration Burst Distance
- Sprint / Burst Acceleration Reps
- Top Acceleration Force
- Time from Top Speed to Full Stop
- Tight Turn Entry, Mid, Exit Speeds
- Tight Turn Radius, Distance Gain
- Wide Turn Entry, Mid, Exit Speeds
- Wide Turn Radius, Distance Gain

2023 - Coquitlam, Canada

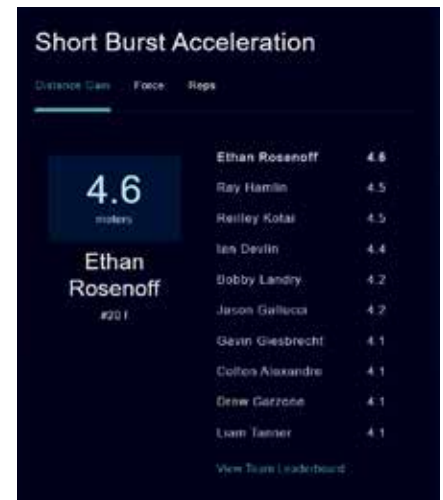
Coquitlam Express Team Benchmarking

The Coquitlam Express are a Junior A club in the BCHL and have been using Drive Hockey's tracking system since 2022. The team is capturing practice and skill based data on their active players and prospects. The system is being used in practices, assessing athletic skill and benchmarking over time, providing players detailed insight on how they are performing compared to their peers and tracking their development progress over time in a fun, competitive way.

Competitive Practice Environments

In addition to benchmarking progress over time, the system offers a way to create friendly, fun competition during practices where players can compete for bragging rights across a variety of metrics.

You play like you practice and practice how you play.



"We are excited to be working with Drive Hockey to offer our players in-depth analytics through their technology. This will give our program the advantage over other Junior Clubs in helping our players continue their development. Analytics don't lie. This system they've created will give direct information to our staff and players which will allow us to work on correcting any mistakes."

- Tali Campbell, General Manager

DRIVE HOCKEY

ANALYTICS



Pacific Junior Hockey League

Aldergrove Kodiaks are part of the Junior B PJHL league operating in the Vancouver, Canada area. The Kodiaks run player identification and evaluation camps throughout the summer, leading up to final team selection in the fall.



Team & Player Level Access

Analytic reports available through team level access or individual. Individual players only have access to their own data and comparative benchmarks of the event or evaluation series best performances.

Player ID Camps & Evaluations



2022 - Langley, Canada

Streamlined, Data-Driven Player Evaluations

During Summer of 2022 Drive Hockey tracked weekly ID camps for the Aldergrove Kodiaks, leading up to a September evaluation camp to finalize the roster. Using Drive Hockey's system, two Kodiak coaches were able to accurately assess all players across multiple events. A customized team leaderboard was used to compare high level attributes, with in-depth performance drill downs reports for each player. Players were benchmarked against the top performers in the camp, with individual feedback reports available for every participant.

Sensor based evaluation tracking means all players are tracked all the time, making running drills extremely efficient. The system analyzes what players are capable of at their best, and compares that to actual game performance. The final evaluation was extremely streamlined, capturing rich analytic profiles:

- Ten minutes of isolated skating drills
- Ten minutes of skating with puck drills
- Forty minutes of scrimmage for game situation performance analytics



"A full battery of tests in about 10 minutes that correlate to game information"

"It was very easy to setup, we did about 5 different tests in 10 minutes and we were able to capture all kinds of data around athletics, acceleration, speed, agility, stopping power, endurance, so a very useful tool to have."

- Ron & Adam, Kodiak Coaches

DRIVE HOCKEY

ANALYTICS

Elite Hockey Skill Development Case Study



Ron Johnson, B.Sc., M.Sc.

Ron holds BSc and MSc Degrees specializing in Hockey Biomechanics, and has been a professional hockey skills trainer and coach for 40+ years. He co-founded two international sport research companies, including NEXT Testing, who in early 2000's introduced timing gate technology for combines, working with the NHL, CHL, NCAA and amateur hockey. Ron has tested and trained thousands of amateur, junior, college, NCAA & pro players world wide.

elitehockeyscience.com
[instagram.com/elitehockeyscience/](https://www.instagram.com/elitehockeyscience/)



Player Performance & Cardiac Test tracking with AI based speed, acceleration, endurance, transition & puck handling analytics

2023 - Delta, Canada

Advanced Binary Testing of 20+ Players in under 20 min!

Ron Johnson takes a scientific approach to training and developing young players into some of the top professionals in the world. Working with Drive Hockey, Ron developed an on-ice binary testing model that can be tracked and processed by Drive Hockey to produce rich player performance and evaluation analytics. The method mirrors the skating and physical 'load' of a typical high intensity hockey shift of 40-45 sec. The test was done for 23 players within a 20 min. time-frame, with each having a practice rep and 3 live reps. Our system tracked every player, and used AI-driven processing to create highly accurate and rich speed, acceleration, endurance, transition and puck handling analytics.

Individual Reports

Each player received a breakdown of key physical attributes benchmarked against top performers. Report highlights how individual player abilities match up to opposing abilities in key situations:

- as Puck Carrier
- as Puck Support
- as Defender



"Being a pioneer of on ice performance testing, first with Excel Hockey in 1996 and later with Next Testing in 2005, Drive Hockey has taken on ice performance and data tracking to another level that will unquestionably launch a new era of analytics."

- Ron Johnson